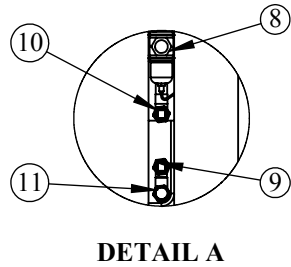
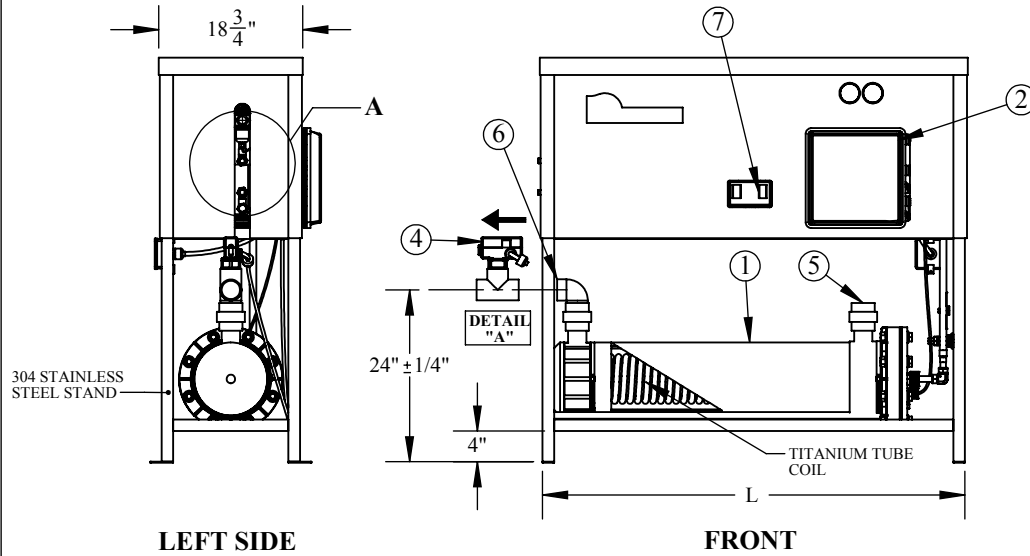


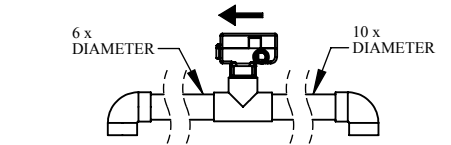
MT-1 THRU MT-8 WATER COOLED WATER CHILLER



NO.	NAME
1	EVAPORATOR-TITANIUM TUBE / 8" SCH 40 PVC SHELL
2	TEMPERATURE CONTROLLER / NEMA 4X ELECTRICAL CONTROL BOX
3	JUNCTION BOX FOR SUPPLY POWER
4	WATER FLOW SWITCH (SEE NOTE FOR INSTALLATION)
5	2" NPS EVAPORATOR WATER INLET
6	2" NPS EVAPORATOR WATER OUTLET
7	LOW / HI REFRIGERANT PRESSURE SAFETY CUTOUT
8	CONDENSER WATER OUTLET
9	CONDENSER WATER INLET
10	CONDENSER WATER FLUSH OUTLET
11	CONDENSER WATER FLUSH INLET

NOTES:

- WATER STOPS FLOWING THROUGH THE CONDENSER WHEN THE CHILLER IS IN THE OFF CYCLE.
- WATER FLOW RATE THROUGH THE EVAPORATOR NEEDS TO BE AT THE MAXIMUM FLOW RATE WHEN WATER TEMPERATURE IS 55°F AND BELOW.



**** IMPORTANT! ***

-DETAIL "A"

-FLOW SWITCH MUST BE FIELD INSTALLED VERTICALLY ON A HORIZONTAL STRAIGHT PIPE WITH NO LESS THAN 10 TIMES THE PIPE DIAMETER ON THE INLET SIDE AND NO LESS THAN 6 TIMES THE DIAMETER ON THE OUTLET SIDE.

OPTIONS:

- SCH 80 PVC SHELL CONSTRUCTION.
- 316 STAINLESS STEEL STAND AND HEX BOLTS.

MULTI-TEMP WATER-COOLED CHILLERS													
MODEL NO.	TON	NOMINAL BTUH	VOLTS/PH/Hz	RLA/LRA	EVAPORATOR WATER FLOW MIN/MAX *(GPM)	CONDENSER WATER FLOW MIN/MAX *(GPM)	CONDENSER WATER CONNECTIONS SIZE (FPT)	REFRIGERANT CHARGE R-410A LBS/OZ	L (IN)	H (IN)	DRY WEIGHT (LBS.)	SHIPPING WEIGHT (LBS.)	SHIPPING DIMS (LxWxH)"
MT-1-WC	2	24,000	208-240 / 1 / 60	13.8 / 127	20 / 40	2 / 4	1/2"	3 / 5	43	53	320	415	49x31x60
MT-3-WC	3	36,000	208-240 / 1 / 60	16.6 / 175	20 / 40	2 / 5	1/2"	3 / 10	43	53	330	430	49x31x60
MT-4-WC	3	36,000	208-240 / 3 / 60	12.7 / 128	20 / 40	2 / 5	1/2"	3 / 10	43	53	330	430	49x31x60
MT-4-460-WC	3	36,000	460 / 3 / 60	7.5 / 63	20 / 40	2 / 5	1/2"	3 / 10	43	53	330	430	49x31x60
MT-5-WC	4	48,000	208-240 / 1 / 60	17.3 / 129	30 / 60	3 / 7	3/4"	4 / 12	55	53	350	450	62x31x60
MT-6-WC	4	48,000	208-240 / 3 / 60	13 / 156	30 / 60	3 / 7	3/4"	4 / 12	55	53	350	450	62x31x60
MT-6-460-WC	4	48,000	460 / 3 / 60	8 / 75	30 / 60	3 / 7	3/4"	4 / 12	55	53	350	450	62x31x60
MT-7-WC	5	60,000	208-240 / 1 / 60	23 / 129	30 / 60	4 / 8	3/4"	7 / 5	55	53	360	460	62x31x60
MT-8-WC	5	60,000	208-240 / 3 / 60	19.3 / 225	30 / 60	4 / 8	3/4"	7 / 5	55	53	360	460	62x31x60
MT-8-460-WC	5	60,000	460 / 3 / 60	9.8 / 114	30 / 60	4 / 8	3/4"	7 / 5	55	53	360	460	62x31x60

* CONDENSER FLOW RATE IS BASED ON A MINIMUM OF 55°F AND MAXIMUM OF 75°F WATER TEMPERATURE. CONSULT WITH THE FACTORY IF THE WATER TEMPERATURE IS OUTSIDE THESE PARAMETERS.

*ALL DIMENSIONS ARE APPROXIMATE AND CAN CHANGE AT ANY TIME.

* COPYRIGHT *

These drawings including design ideas and construction techniques herein are the sole property of Aqua Logic Inc. They shall not be revised, copied, or reproduced in any manner without the written consent of Aqua Logic Inc.

DESCRIPTION

MT-1 Thru MT-8 Water Cooled Water Chiller Specification Sheet

DRAWN BY

Arnaldo Guzman

DATE

7/22/2014

REVISION

SCALE

1:25

SHEET #

1 of 1

aquaLogic

8268 Clairemont Mesa Blvd
San Diego, CA 92111

Drawing #

PDF-0060

SHEET TITLE

MT-1 THRU MT-8
WATER COOLED
WATER CHILLER